

AP MORGAN



Kempsey Close, Redditch,
Asking Price £165,000

Features:

- Well positioned in Woodrow North
- Mid-terraced family home
- Three well-proportioned bedrooms
- Kitchen/diner with space for appliances
- Lounge with view and access to the garden
- Low maintenance garden
- EPC Rating: TBC

Description:

A spacious three-bedroom, terraced family home, positioned in the popular residential area of Woodrow North, Redditch.

The ground floor accommodation comprises: Generous entrance hallway with stairs rising to the first-floor landing, a handy storage cupboard and enough space for a downstairs study set up beneath the stairs and a guest WC, fitted kitchen/diner with a range of wall and base units, along with space for freestanding appliances, and the generous lounge with sliding doors opening to the rear garden.

The first-floor landing comprises: Bedroom one with a view to the rear and a walk-in wardrobe, double bedroom two with space for wardrobes, well-proportioned bedroom three (currently used as an office), and the recently refitted family bathroom providing a bath with overhead shower, wash basin and WC.

Outside, the low maintenance rear garden is laid to patio slabs and slate, benefits from a brick-built store and gate leading to a footpath behind.

Well positioned in a cul-de-sac location, the property offers good access to local amenities, schooling, Alexandra Hospital, supermarkets and restaurants, as well as to the national road networks.



Details:

Entrance Porch and Hallway

Kitchen/Diner 16'8" x 10'1" (5.08m x 3.07m)

Lounge 10'1" x 16'9" (3.07m x 5.1m)

Guest WC

Bedroom One 13'7" x 10'11" (4.14m x 3.33m)

Bedroom Two 10'1" x 10'1" (3.07m x 3.07m)

Bedroom Three 10'2" x 6'5" (3.1m x 1.96m)

Bathroom 6'3" x 6'5" (1.9m x 1.96m)



EPC Rating: To be confirmed

Council Tax Band: A (tbc by solicitors).

Tenure: Freehold (tbc by solicitors).

For more information or to arrange a viewing, please call us on 01527 406 956.

How can we help you?

Need a mortgage?

We recommend Wiser Mortgage Advice. They will search the market for you to ensure you get the right lender and mortgage deal. They typically achieve mortgage offers much more quickly than if you were dealing with lenders directly. The initial appointment is free and without obligation. Call us on 01527 406 956, or visit their website for more information: www.wisermortgageadvice.co.uk

Property to sell?

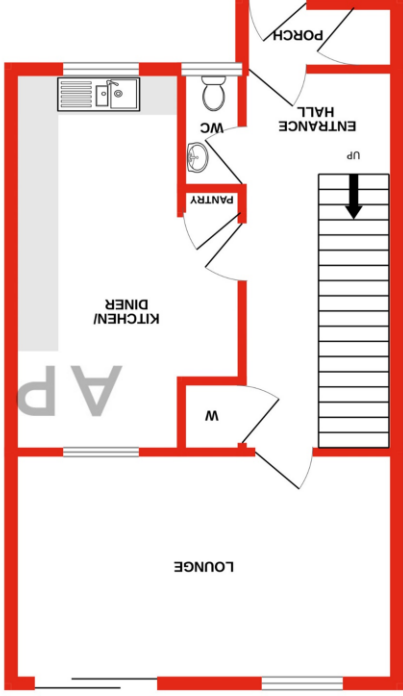
If you need to sell a property in order to buy, you ideally need to be on the market at least (and preferably Sold STC) before viewing, otherwise you may lose out to other buyers when the right property comes along. In these circumstances we can get your property 'live' quickly. Just book a free valuation and we will visit your property and discuss your needs.

Need a solicitor?

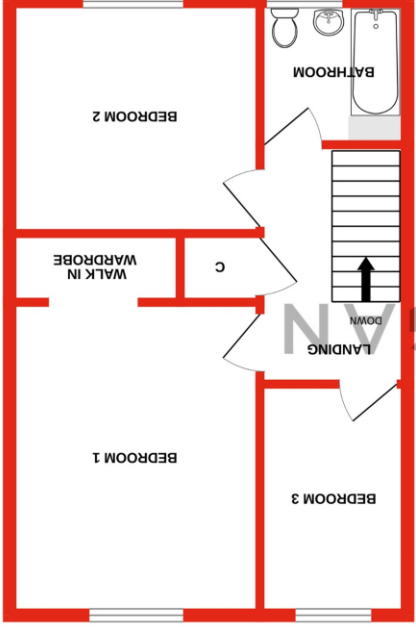
A good solicitor can save you literally weeks of time in the buying/selling process, reducing the stress levels of all involved. We will instruct a reputable firm that is competitive on cost and very reliable. Just ask for a quote.

Need a removal company and storage?

A professional removal company takes the stress out of moving, knowing that your belongings are safe and insured far outweighs any small savings by trying to do it yourself or using a man-and-a-van service. We work closely with and recommend Cube Removals as the leading local firm. For peace of mind and a reliable service call them on 0800 193 0000 or visit their website, cuberemovals.co.uk, to arrange a survey.



GROUND FLOOR
467 sq.ft. (43.4 sq.m.) approx.



1ST FLOOR
462 sq.ft. (42.9 sq.m.) approx.

TOTAL FLOOR AREA : 928 sq.ft. (86.2 sq.m.) approx.
What every attempt has been made to ensure the accuracy of the floorplan contained here, measurements of doors, windows, rooms and other items are approximate and no responsibility is taken for any error, omission or mis-statement. This plan is for illustrative purposes only and should be used as such by any prospective purchaser. The service, fixtures and appliances shown have not been tested and no guarantee as to their operability or efficiency can be given.
Made with Mapbox ©2024

No statement in these details is to be relied upon as representation of fact, and purchasers should satisfy themselves by inspection or otherwise as to the accuracy of the statements contained within. These details do not constitute any part of any offer or contract. AP Morgan and their employees and agents do not have any authority to give any warranty or representation whatsoever in respect of this property. These details and all statements herein are provided without any responsibility on the part of AP Morgan or the vendors. Equipment: AP Morgan has not tested the equipment or central heating system mentioned in these particulars and the purchasers are advised to satisfy themselves as to the working order and condition. Measurements: Great care is taken when measuring, but measurements should not be relied upon for ordering carpets, equipment, etc. The Laws of Copyright protect this material. AP Morgan is the Owner of the copyright. This property sheet forms part of our database and is protected by the database right and copyright laws. No unauthorised copying or distribution without permission.